

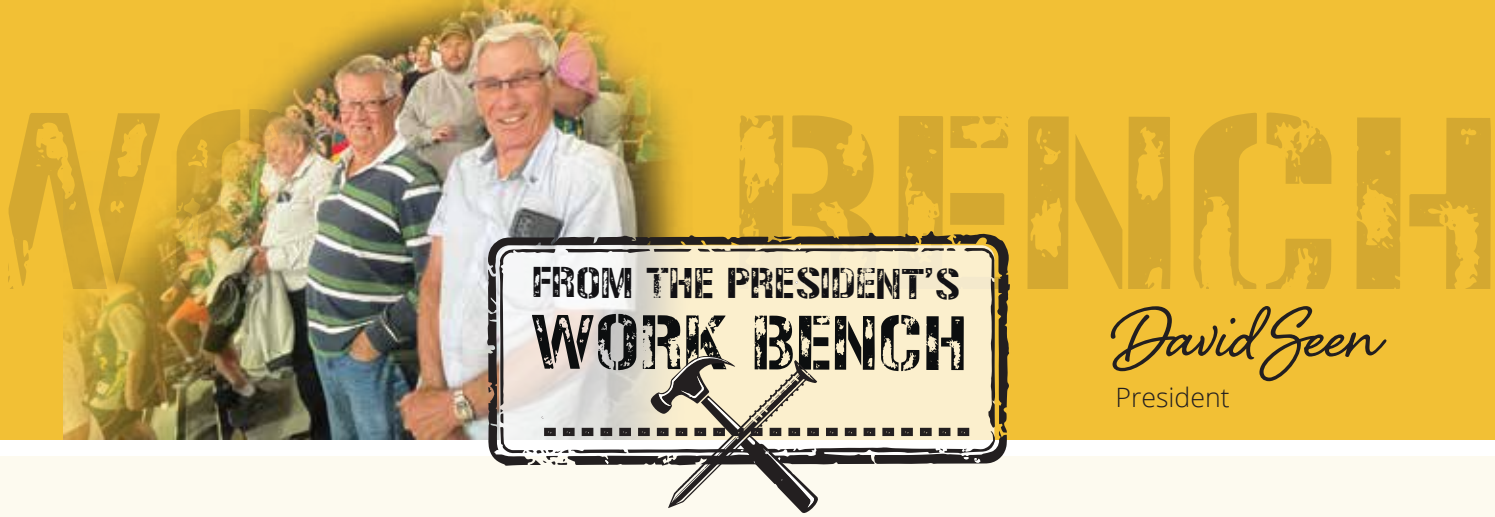
TASMANIAN
MEN'S SHED
ASSOCIATION INC



SHED NEWS




auroraenergy
AUTUMN 2024



Greetings to all Shed Members,

I trust everyone has enjoyed the summer break, whether it be camping, fishing or just visiting family and friends around our island state or on the bigger Island, or just taking it easy.

As we all return to our Sheds and get back into the swing of things, so too has TMSA. On Thursday 29th February TMSA hosted our first regional gathering for 2024, on the Northwest Coast, hosted by the Penguin Men's Shed. I was extremely pleased to see a number of new faces and of course our regular supporters join us for the day, with only three of the Northwest Member Sheds absent.

An outcome from this gathering will be letters to all levels of Government bringing to their attention concerns regarding the support for males with prostate problems and the health support required - not only for Shed Members but for all the male population of Tasmania. I ask that all Sheds help us with our campaign to bring attention to how critical improvement is required in this area.

The discussions for the day highlighted how critical it is to have a function that can create open discussion and gain the full support of all those attending. I fully recommend that Sheds offer to host gatherings as long as there is room for approximately 50 people to sit around and discuss matters that are of a concern to the group and cater for a light luncheon. Should your Shed be prepared to host a gathering but would like further details I am only too prepared to talk with you. Remember that TMSA assists with funding the cost of the luncheon.

ACNC (Australian Charities and Not For Profits Commission)

As Sheds would be aware by now the new tax rulings will apply from 1st July 2024. Along with information provided to Sheds previously, additional information to further assist in preparing the application for the ACNC, TMSA will be sending to the nominated email addresses of all Sheds additional details that should be of assistance.

TMSA Budget Submission

With an election approaching, I would like to encourage all Sheds to support TMSA in securing additional funding to provide full time employment for our Executive Officer. With the number of Sheds increasing by over 30% (and additional Sheds currently in discussions with TMSA) since Wendy took on the position, the current funding will not provide the ongoing support that TMSA currently provides to Sheds.

Australian Men's Shed Association

Following the AMSA elections in December I have (with the support of our Sheds) been elected to the AMSA board. As some may have read in the February edition of "Nuts and Bolts" (AMSA Newsletter) TMSA have not signed the MOU with AMSA, although it was accepted by the AMSA Board early in November, TMSA has only just received the official document from AMSA to sign, this I anticipate will be completed during March.

As AMSA Member Sheds would have also read, there will be constitutional items to be voted on in the near future. The next AMSA board meeting that I will be attending is in Melbourne on 26th March, as Paul Sladdin's term as Chairperson is completed, this will include the election of a new Chairperson.

And on a final note, a huge thank you to the Spirit of Tasmania for their kind donation of tickets to a Jack Jumpers basketball game in January. These tickets were offered to a number of Southern based Sheds, and those that could attend enjoyed the game, and the win, immensely. Thanks again to the Spirit of Tasmania for their support of our Tasmanian Men's Shed Movement.



Minister's Report

Jo Palmer Minister
for Community Services
and Development

Jo Palmer

HELLO TMSA MEMBERS!

We all know our Men's Shed Association makes such an important contribution to the wellbeing of men across our state.

Since the TMSA was formed as a peak body in 2009 the 71 Tasmanian sheds have become a hugely valuable resource and make a profound impact on individual lives and communities – not just for their projects and beautiful handmade products, but for the conversations, support, mateship and safe space they offer to a wide demographic of men in our community. The value and flow on effects of these resources can't be measured.

I was delighted to learn that Tasmania has the highest density of Sheds per capita in Australia, with more than 10 sheds per 100,000 people – that's a huge achievement for our state – we are certainly punching above our weight! Men's Sheds play an important role in providing spaces which bring men of all ages together to learn new skills and to share information about men's health and wellbeing.

This year I have so appreciated the opportunity to meet with Executive officer Wendy Kennedy and the TMSA executive including President David Seen, Vice President; Rob McKenzie, Secretary,

Bruce Weller; and treasurer David Gray to learn more about the activities, challenges and triumphs of these community hubs.

On the invitation of my friend and parliamentary colleague Leonie Hiscutt I had the great pleasure of catching up with the Terry, Errol and the crew at the Kentish Men's Shed in Sheffield last month. I loved the opportunity to share a packet of Tim-Tams and a cup of tea in the sunshine with this great group. I took a tour of the remarkable rehomed blacksmith's forge, the craft workshops and the garden and was blown away by the variety of projects underway!

The shed has 40 members and health practitioners call in monthly to check up on their physical health and mental wellbeing. There was a real feeling of community and it was obvious they cared about each other.

I had such a lovely afternoon and will treasure my very own Men's Shed bucket hat and wooden spoon as special souvenirs. Thank you again to the Kentish Men's Shed for your hospitality and also for your passion and dedication towards our Men's Shed community and I hope to be back for another cuppa when I'm next in the neighbourhood.



Hello To All!

Hi everyone – Happy New Year to you all. I'm looking forward to getting around the State and visiting as many Sheds as I can and to see many of you at Gatherings throughout the year.

Remember, if your Shed would like to host a local or a regional Gathering, please let me know – TMSA funds the lunch on the day. It's a really good way to get to meet other Shed Members and exchange ideas.

Tax reforms will be a big issue for many Sheds. We are waiting on information from the National Body which will hopefully simplify the process for Sheds.

The Finishing Strong Program has commenced, and regional dates are listed on page 7 of this edition of Shed News. We will be sending out booking forms soon, look out for these. This Program, run by Darren Clark has been funded by TMSA.

Our State gathering and AGM will be held at The Grange on 15th of August. This is always a wonderful day so get that date in your diary. Invitations will be sent out.

It's been a pleasure to see so many Sheds thriving, with many valuable community projects being undertaken. We would love to see some photos of work that has taken place to include on our Social Media pages and for inclusion in this magazine.

As we start the year, I'd also like to acknowledge our committee, they do a power of work that often goes unnoticed. They are all volunteers and continue to lead our organisation in making the Men's Shed Movement in Tasmania, a positive place for Men to get together with other Men.

We have had an overwhelming response from Sheds regarding the Antarctic Festival Penguin Project. I'll be keeping you all informed with updates.

Remember, if you have anything you would like to include in Shed News - you know how to contact me!



Editor: Wendy Kennedy
Letters to editor or contributions send to:
tmsaxo@gmail.com

This publication is proudly sponsored
by Aurora Energy

Around The Sheds

Who's up to what in our world of sheds and people



FINISHING STRONG UPDATE

As many of you know, our 'Finishing Strong' program has commenced in some sheds around the State. The program is all about helping men in their later stages of life. Our facilitator Darren Clark has been really impressed by the level of camaraderie amongst the men at the Sheds he has been working with...while the Sheds have their own personalities and style, the brotherhood is very strong! Darren said.

Larger training sessions will take place in the following regions on the dates listed - locations will be forwarded soon with your opportunity to book a space:

North West	16/17 April
South	1/2 May
North	6/7 August

Watch your emails for booking forms - we hope to see each session booked out.

Finishing Strong - it's so important. and funded by TMSA.



Howard Kelly South Arm Shed



Caught you Duncan! President Claremont Men's Shed



Top bar beehives

By Baydon Smith Devonport Shed



My start in bee keeping began when a friend asked if he could place a hive on my town block. After watching him for four years, Wally said he was moving out of town, and would like me to have one of his hives?

This was a standard Langstroth hive. When it came to harvest the honey it was difficult to extract it. After looking at other methods of keeping bees, enter Kenyan Top Bar Hives. Using this method is a totally different way to keep bees,

There are no boxes and frames as there are in a Langstroth hive. The bees build their comb from bars placed across a trough shaped box. When it is time to harvest honey, the bars are lifted out and trimmed off the bar, then crushed and strained to remove the wax.

This is not a commercial way to keep bees but it is a great way to keep one or two hives for your own use. In a good year each bar will hold 1.1/2 KG of honey and between 5 to 10 bars. This is more honey than most families will need.

Yes, you will need PPE Gear and a smoker to work with the hive, but no extractor boxes and frames. Building a top bar box was at first not easy as there were no plans available. So, after carefully studying videos and images on the internet, finally I came up with the dimensions for a workable hive.

The bars were the biggest problem, but I now have it. OK, they are the item that takes the longest to make and they must be to a set design.

The dimensions are 1.200mm long 550mm wide at the top 200mm and the bottom and 300mm deep. This gives an angle of 30 degrees slope on the sides.

The lid is made to be a close fit to the outside measurements of the box. It can be as fancy as you like but it must be water tight, water is the enemy of bees.

When I joined the Devonport Men's Shed it was the perfect place to build my boxes. Many jokes were made about making coffins and other things like 'a little short for you', 'they will cut your legs off to make you fit', 'do you have a midget in your family', however after I built the first one with bees installed they could see how it all worked

Timber for the hives comes from wherever I can get it for free. Large shipping pallets are good, the timber stack at the tip is also a good source. I must thank the Devonport Men's Shed for their tolerance of me and allowing me to carry out the building of the hives at the Shed.

Their tolerance was rewarded when I caught several swarms of wild bees and installed one in a hive at the shed as a gift to the Shed members. It is yet to produce honey but should do this summer. I'm not sure what will happen to the honey or the future of the hive, they are something that can be sold should the Shed choose to do so.

The Devonport Men's Shed is a happy place to go and use the skills I had when I worked as a tradie in the papermills. I worked there for 30 years at Wesley Vale.

Sorry, there are still no physical plans for building a hive, but that is a project for the new year and a must do project... watch this space.



Committee Training
FOR COMMUNITY ORGANISATIONS

**Limited Places
Book Now**



FREE, FUN AND USEFUL COMMITTEE TRAINING

For Community Groups
and Clubs

You will learn about:

- Role of committee members and office bearers
- Key responsibilities of committees
- How to have effective committee meetings
- Recruiting volunteers and committee members
- Finances and budgeting
- Decision making
- Risk and conflict of interest

Morning tea and lunch provided

2024 Workshop Schedule:

Friday 16 th February	Fingal
Friday 15 th March	Flinders Island
Friday 12 th April	Hobart
Saturday 13 th April	Kingston area
Friday 24 th May	Launceston
Saturday 25 th May	Longford
Friday 21 st June	Devonport

Saturday 22 th June	Burnie
Friday 26 th July	Sorell
Friday 16 th August	Glenorchy
Saturday 17 th August	Bruny Island
Friday 20 th September	Port Sorell
Saturday 21 st September	Ulverstone
Friday 25 th October	Riverside
Saturday 26 th October	Bridport

Further information and how to register can be found at
www.communitycommitteetraining.com.au

The Grassroots Community Governance program is a fully funded initiative of the Tasmanian Community Fund.

Further Information: steve@alkas.com.au

Around The Sheds

A quick run around to see who's up to what in our world of sheds and people



Devonport

Men's Shed Update

It's Official

Devonport Men's Shed held their grand opening in February - it was a celebration of what can happen when you have a group of dedicated volunteers that are prepared to put in the hard work to finally enjoy the rewards of their labour - a fantastic shed.

The story began quite a few years ago when the Shed needed to find a new location while under the Presidency of Mal Reid. This was not an easy task but eventually a suitable site was found in Steele Street, and the relocation began. With lots of challenges, setbacks, and disappointments throughout the process, the Shed is now a shining example of exactly what a group of volunteers can do. Current President Kevin Boyle hosted a well attended event and wanted to make special mention of the TMSA Grant program which helped Devonport build some of the new facilities.



Devonport Deputy Mayor Stacey Sheehan, The Hon Felix Ellis, Devonport President Kevin Boyle and TMSA EO Wendy Kennedy

Around The Sheds

A quick run around to see who's up to what in our world of sheds and people



Busy Times

Eric the 'master craftsman' Claremont Men's Shed

2: Baydon and Stephen and the new wall at Ross

3: Ulverstone's Ernie with a happy customer



The Power People

Energy bills and the cost of living continue to be a challenge for many people. Supported by Aurora Energy and TasNetworks the Power People Pilot Project is well underway and aims to provide people with ways to manage and reduce their energy bills. Several Men's Sheds across Tasmania have put their hand up to participate with Channel, Rosebery, Kings Meadows, Waratah, Dover Men's Sheds and Clinton Lucklock part of this first phase of the project.

The project aims increase energy literacy within the Tasmanian community and a small regional spread of Men's Shed's are leading the charge.

The Power People Project is good example of energy companies and community collaborating to empower individuals with the knowledge and skills needed to understand their energy usage, manage costs effectively, and make informed decisions in the ever-evolving energy landscape.

Representatives from each shed are being trained as "Power People" for their shed, who will, in turn, share valuable information and insights about the energy sector with their local Shed communities. Aurora and TasNetworks will be supporting and providing resources to the Power People, the sheds involved and the project the whole way along.

"I'm enjoying being part of this project because I can see how the information will help our Shed members manage energy use and bring down their power bills" said Phillip Atkins from Kings Meadows. "Aurora and TasNetworks really have supported us to design the workshops in a way that works for us". Phillip Atkins – Power Person – Men's Shed Kings Meadows.

This project is more than a traditional outreach effort; it's fostering a community-led approach to knowledge about energy and energy usage.



Supported by: Aurora Energy & TasNetworks

The Power People will be representing their communities, sharing information, and ensuring the delivery suits the unique needs and preferences of their communities. Whether through in-person educational sessions, community forums, online platforms, or hard copy materials, the Power People will help to make sure that the information is accessible to everyone.

The Men's Sheds are co-designing the project, learning about energy topics, and receiving support about delivery methods. There's been some fun and laughs along the way. The sheds have chosen three topics (Understanding Your Energy Bill, Smart Technologies for the Future, Energy Efficiency), and as the project evolves there could be more topics added to that list.

The pilot, set to run throughout the remainder of this financial year, marks the initial phase of a broader vision and hope for future phase, with the aim to evaluate the impact of the pilot phase, gather feedback, and refine the approach and hopefully a larger roll-out across the broader Tasmanian Men's Shed network state-wide, in the future.

This collaborative project embodies the spirit of community empowerment, leveraging the unique strengths of Men's Sheds to create a more energy-literate and resilient Tasmania. Together, we're not just illuminating homes; we're lighting the way to a more informed and empowered future.

By the community and for the community. Just as it should be.



Thanks to Mark Brostrom, Power Person, Waratah Men's Shed; Glen Hollings and David Martin, Power People, Dover Men's Shed; Phillip Atkins and Ian Green, Power People, Kings Meadows Men's Shed; Kevin Dogruseve, Power Person, Men's Shed Rosebery; Peter Norris, Power Person, Men's Shed Channel and; Clinton Luckock, Power Person, Tasmanian Men's Shed Association, for stepping forward into this exciting opportunity for Tasmania.

HONOUR OUR VOLUNTEERS



It's that time of the year again where we ask you to think about nominating someone in your shed for the TMSA Shedder of the Year 2024 Award. This prestigious award is announced at our Statewide get together and AGM in August. All you have to do is send an email to tmsaxo@gmail.com outlining the service that the nominee has given to your Shed.



MENS TIPS

Care Finder



COTA Tasmania's Care Finders offer guidance to connect older Tasmanian's who are most at risk, and who may not have their own support networks to help them navigate the Aged Care system. We help people seeking aged care support for the first time, or those who are already receiving care whose needs or preferences have changed. We support older Tasmanians who may have complex needs, don't have anyone to support them, or are likely to miss out on services without our help.

For more information on Care Finders, or to access this program please call 1800 818 048 or visit cotatas.org.au/programs/carefinder
COTA Tasmania's Care Finder Service is supported by funding from Primary Health Tasmania (Tasmania PHN) through the Australian Government's Primary Health Networks Program.



Former President of Hobart Vintage Machinery Club - Phil Brooke has made an outstanding contribution to the Men's Shed Movement in Tasmania. As he prepares to make the big move to Cairns, where he has already joined a Shed, TMSA presented Phil with a Certificate of Recognition and thanked him for his years of dedication as a volunteer. We wish Phil well and look forward to his continued contributions to Shed News. 🌟



carbatec
THE HOME OF WOODWORKING

**EXCLUSIVE
OFFER**

SAVE 15%

**Men's Sheds save 15%
on all purchases* at Carbatec.**

All the best woodworking brands are at Carbatec!

From the pyrography machine to the professional heavy-duty machinery, you'll find everything you need to make your woodworking projects a success.

Visit our knowledgeable team in store or call 1800 658 111 to redeem this offer.

*Offer excludes gift cards, already discounted items, Axiom, i2R, SCM, Festool, Veritas, Tormek and freight.

nova **VIKING**
FOR A QUALITY GREAT TECHNOLOGY



★★★★★
**TOP
SELLER!**
★★★★★

Nova Viking 16" DVR
Drill Press
TK-VIKING

DRILL PRESSES

LAGUNA



*Cabinet stand shown
is sold separately*

★★★★★
**TOP
SELLER!**
★★★★★

Laguna Supermax 25/50 Wide
Drum Sander - CE Model
LGT-WDS-2550

SANDERS

carbatec



★★★★★
**TOP
SELLER!**
★★★★★

Carbatec 14" (345mm) Heavy Duty -
High Capacity 3HP Bandsaw
BS-X3453C

BANDSAWS



Robert Sorby Peter Child
Artist's Pyrography Machine
RSB-PYRO240D

PYROGRAPHY



Chisel not included

DMT 203mm Duosharp - Fine and Coarse -
With Base
DMT-WM8FC-WB

SHARPENING



Carbatec Belt/Disc Cleaning Stick
Available in large or medium size
BELT-CLEANER-L

MAINTENANCE

and so much more!

Visit your local store, carbatec.com.au or call 1800 658 111

ADELAIDE
08 8362 9111

BRISBANE
07 3390 5888

HOBART
03 6272 8881

MELBOURNE
03 8549 9999

PERTH
08 6143 5788

SYDNEY
02 9648 6446

Written by Tony Forbes,
Carbatec Product Manager.

The Basics of Dust Extraction

Dust Extraction Guide.
Keep your workstation safe and clean.

You have just unpacked your latest purchase... a beautiful Carbatec 15" thicknesser. You've cast aside the unread manual and have dived head-first into the assembly. All bolts tightened, blades aligned, and you head straight for the pile of waiting timber. What a magnificent collection of exotic hardwood, just pleading to be converted into a three-meter-long dining room table. You plug in your new weapon and throw your first victim to the spinning blades.

It's hard to recall what first hits you, the ear-piercing scream of the blade hitting solid timber, then the mulching of the waste material, or the fact that the workshop rapidly fills with re-mulched hardwood shavings. As you cough up some dust, you think to yourself, "Pity the quality of the milled finish isn't exactly what I expected."

The Importance of Dust Extraction

Professional woodworkers have known for decades that an adequate dust collector is one of the most important pieces of machinery in the workshop. It's only us, serious DIYers, that seem to question their wisdom. A clean, dust-free workplace is not only safer but far less work in the long run.

There is less cleanup and less airborne dust, which is very important in the finishing stage.

Another important fact is that it is far better for your machinery to have these dust and shavings removed. Other than being forced back around the cutting area and affecting the quality of the work, fine dust particles can be sucked into electrical components, build up on moving parts or pile up in areas underneath your machinery, becoming a fire hazard in the process.

Worst of all, these particles can find their way into your lungs. Dust collection is NOT a replacement for PPE (Personal Protective Equipment,) but it reduces the dust in your immediate work area, which means your PPE is going to work much more efficiently too.

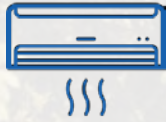
The sad fact is that running machinery without dust extraction may affect your warranty if something does go wrong. "Why didn't I read the manual?"





Reduce Your Power Bill

Tips to help you save energy and money



Up to 50%

The amount of household power attributed to heating. Buy heaters with a high energy efficiency rating to keep running costs low.



5 hours

The amount of sunshine hours Tassie gets on average per day. Use your own solar power rather than exporting it to the grid to save on power.



18–21

The amount of degrees you should keep your heater at in winter. Every degree over 21°C adds 10% to your energy use.



128 hours

The amount of hours per week it's cheaper to use power on our Peak and Off Peak energy plan (that's over 73% of the time!). Take advantage of cheaper off-peak times to save.



\$760

The amount you could save per year by doing these four things:

- Getting rid of your second fridge.
- Switching the gaming console off after use.
- Use the clothesline once a week instead of the dryer.
- Replace a standard showerhead with a water efficient 4-star one.

Find more tips at www.auroraenergy.com.au

The Serial Hobbyist

Bruce Weller – TMSA - Secretary

The Tasmanian Men's Shed Association's Secretary, Bruce Weller grew up in Belgrave on the outer suburbs of Melbourne. 'My parents ran a mixed business and later one of the very early continental delicatessens'.

Bruce's upbringing was fairly conventional, attending state school education before spending a couple of years at university. Bruce drifted into the banking sector, 'I stuck with banking for over four decades whilst raising a family.'
'I had lots of different jobs under one umbrella and finished up managing operational risks, identifying risks before loss or injury occurred.'

Bruce has lived in the peaceful and picturesque Margate area for the past 13 years and is a member of the Channel Men's Shed where he has taken on the role of Mentor Coordinator as well as the Secretary of TMSA.

Bruce's first introduction to his Men's Shed was attending a publicly advertised meeting to explore the foundation of the Shed. Leaving the meeting impressed by the substantial turn out and the practical support that was offered to get the project off the ground – there was little doubt he wanted to be involved.

Not being a particularly social animal and leaving a job of four decades to slide into retirement could have meant isolation. 'The Shed has provided me with contact with my peers,' along with people that he may not have ever met.

Bruce declares that he's a serial hobbyist, 'one of everything and nothing to expert level'. He's 'dabbled' with letterpress printing, tiny leather boots for dolls, keypouches, wallets and the like, some larger woodcraft pieces including a coffee table and some workshop storage. 'Most of the stuff is given away. My approach is to have a go and see what comes out.'



*'just walk in,
introduce yourself
and make a mate'.*

Men's Shed's in general are filled with men from all walks of life. The Channel Men's Shed has a collection of guys from all fields of previous employment. 'The Channel Shed has anything from a time served toolmaker, a proprietor of a cabinet store, an airline pilot, a company Vice President and a Dendroecologist - tree rings are fascinating.'

The Channel Men's Shed Committee deems that its job is to support whatever members are prepared to do. My approach is usually, 'that sounds like a real challenge, what are you going to do to get it off the ground.'

The Channel Men's Shed often gets requests from the local community to build or repair all matter of things. 'We are usually responsive to local requests.'

The Shed is always mindful of the services offered by local tradesmen and prefer to help those who are willing to help the local community. 'We have assisted in providing a Wendy House and a boat in the schoolyard for the local primary school. We supply regular meals for Kingborough Helping Hands and have constructed a mounting ramp for Riding for the Disabled, along with building nesting boxes for the threatened Orange Bellied Parrot breeding program and modified platypus burrows to allow easier observation.'

One request was to support a Tas Uni research project to look at climate change over the past couple of millennia. 'We used our over-arm router to clean up Huon Pine stump offcuts to expose the growth rings which can be imaged and compared to track back time.'

Like a time capsule all the information was stored right there within those ancient tree rings. 'There were some fascinating insights and, of course, trees cannot lie about the weather patterns and changes to our climate.'

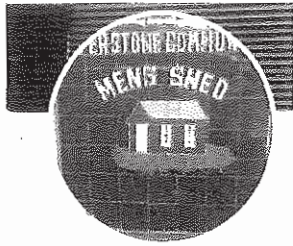
Over the years the Channel Men's Shed has offered its members access to woodworking, welding, small engine repairs, lapidary, pewter work, sail making, amateur radio, electronics, plus regular coffee mornings, barbeques and outings.

Bruce considers that the Men's Shed organisation is a valuable platform of balanced information about men in general and their contribution to society and their local communities. 'The organisation's contribution to showing the media treatment of men - which is largely negative - is not where most men are and as an offset to the negative impact general attitudes can have on men's health.'

What has Bruce got out of being a Shed member? 'Education, ongoing learning and companionship.'

And he encourages anyone thinking of joining a Shed,





In the heart of the Men's Shed where the tales unfold

In the heart of the Men's Shed, where tales unfold, A bloke of seventy (Dave)
abounds with tales untold.
Amidst the sawdust and the scent of pine, A legacy he'll leave carved like the
hands of time (or a lobster).

With fishing tales that ebb and flow, He casts his dreams where the sea waters go.
The chase for trout where the cool waters flow, his dogs by his side, waiting for the
next tide.

Seventy years, a journey so vast, Through the echoes of laughter, memories cast.
In the shed's warm embrace, friendships second to none, Like threads of a story,
waiting to be spun.

The whirl of saws, tools in hand – A haven where a bloke's spirit stands.
His companion boxers and fishing lore, He's sails through the decades, searching for
more.

As seventy candles flicker and gleam, he reflects on moments like a gentle stream.
In the Men's Shed's embrace, his tales are told, A life well-lived, where camaraderie
unfolds.

In the shed's warm haven, where tools do the talking. And the blokes all stand tall
when the trout king walks in.
Seventy years, not bad for this bloke with a dicky old hart, a fart and a joke.

His fishings a treasure, though his wife may lament, the aroma of wood or the stinky
fish scent.

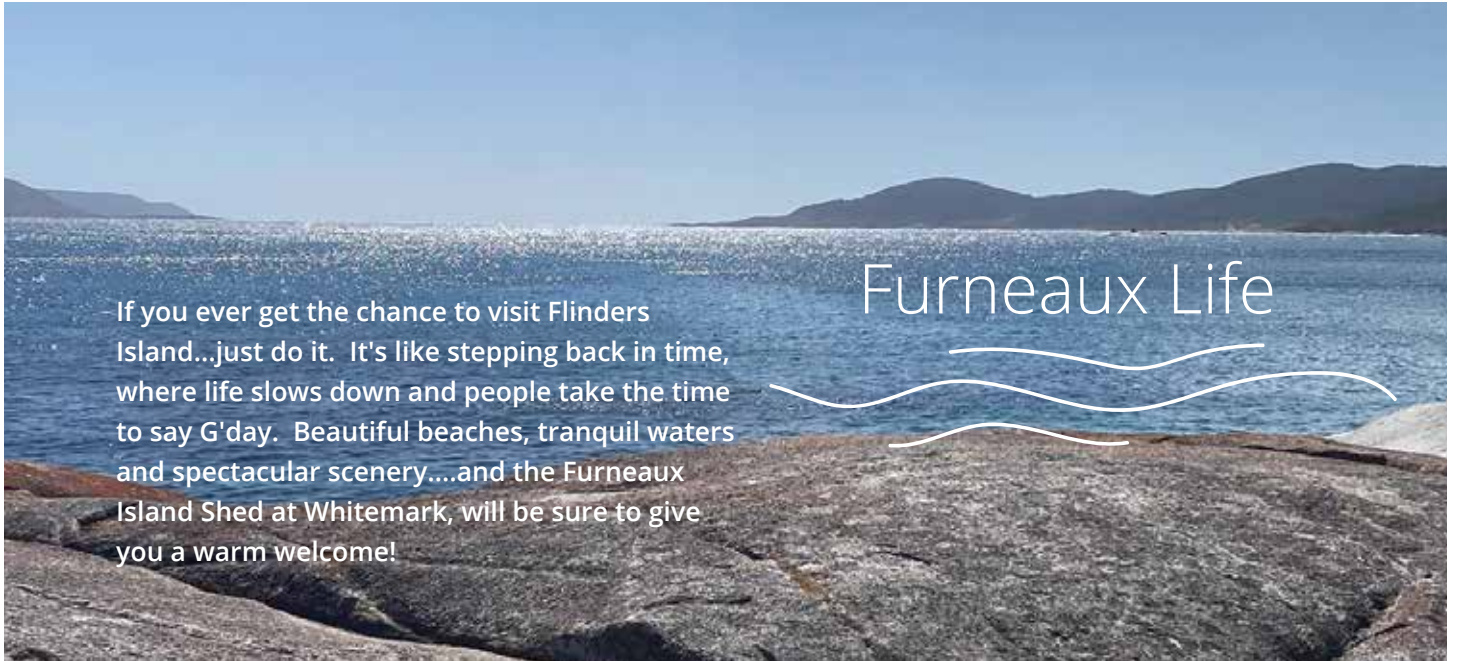
A teller of tales, both rude and risqué. In the company of family he causes affray.
He's witty and grumpy with a heart of gold - who can believe he's 70 years old.

COMPOSED BY CHRIS DELPHIN
Happy birthday Dave

Written by Dave's sister Christine Delphin also known as the 'blueflyer'
for his birthday, bringing a tear to his eye.

Around The Sheds

Who's up to what in our world of sheds and people



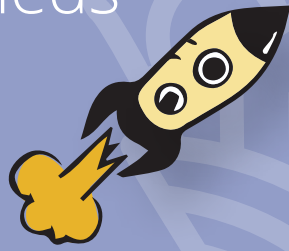
If you ever get the chance to visit Flinders Island...just do it. It's like stepping back in time, where life slows down and people take the time to say G'day. Beautiful beaches, tranquil waters and spectacular scenery....and the Furneaux Island Shed at Whitemark, will be sure to give you a warm welcome!

Furneaux Life

From the tranquil island waters to the inside of the very tidy Furneaux Shed, with Dale Wells on the tools



Around The Sheds



Howrah Shed received a visit from the Hon Nic Street

Latrobe Community Shed shows determination to succeed!

Latrobe Community Shed still hasn't an actual Shed and while this is certainly not ideal it hasn't stopped Nigel and his team. They remain very active in running community events raising funds and the awareness of men's health and wellbeing. They hold a 'Coffee and Connect' meeting in a local coffee shop each month and work out how they can tackle any community work that comes their way. From car events to local Barbies - they are certainly having a good go! Well done to all involved.



*Men have lost many of the traditional places where men got to hang out with their mates. That's why men's sheds exist!



TASMANIAN
MEN'S SHED
ASSOCIATION INC



Around The Sheds



Winner

Shed work mates Jim and Tony from Riverside Men's Shed enjoy teaming up on projects and this hall table is a beauty!



Around The Sheds

Who's up to what in our world of sheds and people



North West Gathering

Penguin Men's Shed were first out of the blocks to host a North West Gathering at the end of February. It was an excellent get together with 13 Sheds attending and around 32 people. We had a great update on the Power People Project from Kevin of Mt Black and Mark from Waratah - well done to all involved in the project.

The presentation from Legal Aid on Wills, Elder Abuse etc provided great information on topics that we tend 'not to' talk about as much as we should.

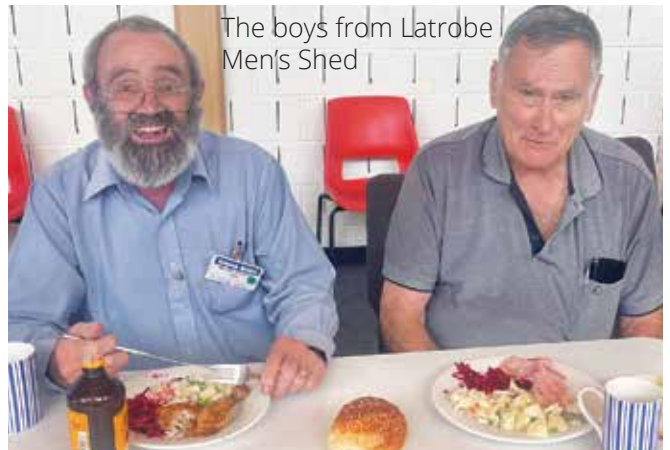
Lunch was very good and even our EO helped with the washing up! A great start to our year of Gatherings. The most important part of the day is outlined below and we are sure that all Sheds in all parts of our State will endorse this.

MEDICAL SHORTAGE CONCERNS

Penguin Men's Shed expresses its concern regarding the shortage of medical specialists in North & Northwest Tasmania. Our particular concern at this time is the shortage of urologists, a key in the diagnosis and treatment of prostate cancer. We understand this shortage is due at least in part to a lack of equipment that recently qualified urologists rely on for diagnosis and treatment - as this equipment is not available in the area, there are considerable problems with the recruitment of urologists fresh from training to boost the numbers. Following on from this, we ask TMSA as the peak body for Men's Sheds in Tasmania to raise our concerns with all Tasmanian politicians, including those seeking election at this time. We are heartened by the resounding approval this matter received at the Northwest gathering at Penguin.



Barry, Bear and Rob



The boys from Latrobe Men's Shed



Simone from Legal Aid



Power People champs
Kevin and Mark

Around The Sheds

North West Gathering



The Penguin
hospitality was
enjoyed by all



Contacts



TASMANIAN MEN'S SHED ASSOCIATION - COMMITTEE CONTACT DETAILS 2022 - 2023

Name	Position	Email Address 1	Mobile Number
David Seen	President	president@tmsasheds.org.au	0418 557 361
Rob McKenzie	Vice President	vice.president@tmsasheds.org.au	0418 141 529
Wendy Kennedy	Executive Officer	exec.officer@tmsasheds.org.au	0438 100 446
Bruce Weller	Secretary	secretary@tmsasheds.org.au	0412 129 074
Dave Gray	Treasurer	treasurer@tmsasheds.org.au	0418 130 234
Clinton Luckock	Rep – South	rep.south.1@tmsasheds.org.au	0418 114 022
Lindsay Jones	Rep - South	rep.south.3@tmsasheds.org.au	0458 073 044
Doug Preece	Rep - North	rep.north.1@tmsasheds.org.au	0402 305 456
Johan Scheer Bear	Rep – North	rep.north.3@tmsasheds.org.au	0419 185 372
Ian Hardstaff	Rep - North West	rep.nwest.1@tmsasheds.org.au	0408 656 043



TASMANIAN MEN'S SHED ASSOCIATION INC. HONOUR ROLL - FORMED 2009

Year	President	Vice President	Secretary	Treasurer	Shedder of the Year
2009	John Waters	Arnold Kreig	Mary-Anne Orchard	Greg Hunt	
2010	John Waters	Ken Sulman	Mary-Anne Orchard	Greg Hunt	
2011	John Waters	Ken Sulman / Arnold Krieg	Brendon Evans	Sandra Comins	
2012	John Waters	Peter Shelley	Ken Sulman	Sandra Comins	
2013	Peter Shelley	Charlie Trafford	Jonathan Bedloe	Sandra Comins	
2014	Peter Shelley	Ross Kent	Jonathan Bedloe	Sandra Comins	
2015	Peter Shelley	Bob Thomas	Keith Ellis	Sandra Comins	
2016	Bob Thomas	Bob Lowe	Keith Ellis	Graham Fogarty	
2017	Bob Thomas	Mike Dennis	Keith Ellis	Graham Fogarty	
2018	Mike Dennis	David Seen	Keith Ellis	Graham Fogarty	
2019	Keith Ellis	David Seen	Bruce Weller	John Bastick / David S. Gray	
2020	Keith Ellis / David Seen	David Seen / Fred Wales	Bruce Weller	David S. Gray	
2021	David Seen	Fred Wales	Bruce Weller	David S. Gray	
2022	David Seen	Fred Wales	Bruce Weller	David S. Gray	Rob McKenzie
2023	David Seen	Rob McKenzie	Bruce Weller	David S. Gray	Steve Youd
	Patron	Bob Clifford			
	Patron	Bryan Wolpole			